

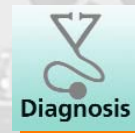


Simply combined: machine protection and trend analysis.



Modified, compact vibration diagnostic unit with trend memory.

- Permanent vibration monitoring according to ISO 10816.
- Integrated trend memory for documentation and evaluation.
- Two switching outputs for warning and alarm.
- Frequency-selective online diagnosis (e.g. rolling element bearing, unbalance).
- Easy set-up using PC software.



Permanent machine monitoring – extended by overall velocity monitoring according to ISO 10816.

The compact vibration diagnostic units of the series VE combine vibration monitoring, diagnosis and trend memory in a very small space.

The integrated accelerometer permanently measures the machine vibrations at a non-rotating component surface and also calculates frequency-selective diagnostic values as an option in addition to the ISO characteristic values.

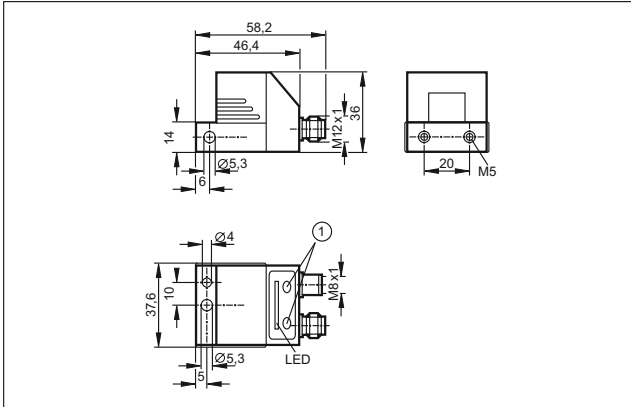
All calculated characteristic values are stored in a non-volatile internal memory. With a freely adjustable memory interval the trend duration can be adapted to the user's needs. The unit is easy to use via PC software.



Monitoring of the overall vibration of rotating components.







Dimensions



1) Programming buttons

Accessories

Type	Description	Order no.
	Parameter setting software version 1.8 and higher	VES001
	Parameter setting cable for RS-232 interface	E11572
	Parameter setting adapter USB / RS-485 interface	E30098
	Power supply	E30080



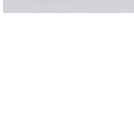
Products

Rolling element bearing diagnosis: 2 g-monitors + 2 frequency-selective diagnostic quantities (e.g. bearing condition)	Order no.
Speed range: 500...6000 rpm	VB1001
Vibration diagnostic unit: 2 g-monitors + 5 frequency-selective diagnostic quantities (e.g. bearing condition)	Order no.
RS-232 interface, LED diagnosis Protection: IP 67, III Ambient temperature: -30...60 °C Frequency resolution adjustable: 1.25 or 0.125 Hz Speed range: 12...12000 rpm	VE1001
RS-485 interface Protection: IP 69K, III Ambient temperature: -30...75 °C Frequency resolution adjustable: 1.25 or 0.125 Hz Speed range: 12...12000 rpm	VE1101

Common technical data

Sensing principle: micromechanical accelerometer / capacitive measuring principle / one measurement axis	
Measuring range	± 25 g (nominal ± 20)
Diagnostic method	spectral analysis, envelope-curve FFT, trend analysis
Current consumption [mA]	100 (24 V DC) (plus optional external pulse pick-up)
Operating voltage [V DC]	10...32
Overload protection [g]	100
Trend memory	2580 data sets as ring memory per diagnostic quantity or g-monitor

Connectors and splitter boxes

Type	Description	Order no.
	Socket, M12, 2 m black, 5-pole, PUR cable	EVC070
	Socket, M12, 5 m black, 5-pole, PUR cable	EVC071
	Socket, M12, 10 m black, 5-pole, PUR cable	EVC072